

MecALAC

SITE DUMPERTA
SERIES



SITE DUMPER

SERIES





TA SERIES

NEW TA RANGE: FULLY COMPLIANT WITH THE LATEST SAFETY STANDARDS

RENTAL TOUGH SKIP
DESIGN AND CHASSIS
FABRICATIONS
FOR UNRIVALLED
RELIABILITY

HAZARD DETECTION
CAPABILITY TO
FURTHER IMPROVE
ON-SITE SAFETY

FRONT-VIEW CAMERA
AS STANDARD (EXCEPT TA1)

STOP/START CONTROL FOR
IMPROVED FUEL EFFICIENCY AND
INCREASED SERVICE INTERVALS

INCLINOMETER / SAFE
TIP INDICATOR ON ALL
MODELS

FORWARD AND SWIVEL
TIPPING MECHANISMS TO
SUIT EVERY APPLICATION

SIDE PROTECTION GATES FOR ENHANCED OPERATOR SAFETY (6/9T MODELS)

FOLDING ROPS FOR EASY TRANSPORT

LARGE OPENING SERVICE DOORS FOR BEST IN CLASS SERVICE ACCESS

HIGH-PERFORMANCE, WATER-COOLED DIESEL ENGINES FOR EFFICIENT OPERATION

TELEMATICS SYSTEM FOR PRECISE FLEET INSIGHT

HYDROSTATIC TRANSMISSION NOW STANDARD ON ALL MODELS FOR EASY, SAFE AND COMFORTABLE DRIVE

MARKET-LEADING GROUND CLEARANCE FOR SUPERIOR OFF-ROAD PERFORMANCE

HIGH-PERFORMANCE DISC BRAKES FOR REDUCED STOPPING DISTANCES

TA1

TA2

TA3

TA3.5

TA5

TA9



SERVICES

PERFORMANCE, PROFITABILITY, LONGEVITY

DISCOVER OUR SERVICES

MECALAC PREMIUM LUBRICANTS

Premium lubricants to get the best out of your machines:

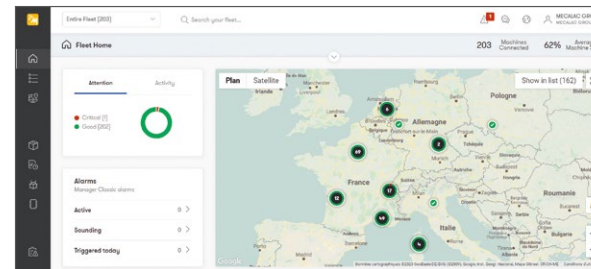
- Extended machine life
- Extended warranty and extended oil change intervals
- All-weather efficiency



MY MECALAC CONNECTED SERVICES

To optimise the use of its machines, MECALAC offers a range of telematics services:

- Remote fleet management
- Access to all machine usage data of the machines
- Limited machine downtime thanks to preventive maintenance





MECALAC GENUINE PARTS

Only genuine MECALAC parts ensure optimum service life and maximum performance:

- Certified genuine parts
- Maintenance kits
- Extended warranty



MECALAC TRAINING



Make full use of the full potential of your Mecalac machines:

- Efficient use
- Individual coaching
- Intensive practice

MECALAC FINANCIAL SOLUTIONS

A complete range of financial products and associated services to meet your specific needs:

- Machine purchase
- Machine rental
- Competitive rates



WARRANTY EXTENSIONS



Our solutions are well-adapted to your needs to maximise the life of your machines:

- Customised contracts
- Peace of mind
- Controlled expenses



The list of services offered may vary depending on your country.
Consult your local Mecalac dealer for details.



TECHNICAL SPECIFICATIONS



TA1EH



TA2SH



TA2SEH



TA3H / TA3SH



TA3.5SH



TA6H



TA6SH



TA9H

Model	TA1EH	TA2SH	TA2SEH	TA3H	TA3SH	TA3.5SH	TA6H	TA6SH	TA9H
Payload kg (lbs)	1000 (2204)	2000 (4410)	2000 (4410)	3000 (6613)	3000 (6613)	3500 (7716)	6000 (13230)	6000 (13230)	9000 (19840)
Power kW (hp)	17.5 (23)	18.5 (25)	18.5 (25)	18.5 (25)	18.5 (25)	37 (50)	55 (74)	55 (74)	55 (74)
Heaped Capacity m ³ (yd ³)	0.54 (0.71)	1.2 (1.57)	1.2 (1.57)	1.95 (2.55)	1.88 (2.46)	1.88 (2.46)	2.9 (3.8)	3.1 (4.1)	4.5 (5.9)

TECHNICAL DATA

PERFORMANCE	TA1EH	TA2SH	TA2SEH	TA3H	TA3SH	TA3.5SH	TA6H	TA6SH	TA9H
Payload kg (lbs)	1000 (2204)	2000 (4410)		3000 (6613)	3000 (6613)	3500 (7716)	6000 (13230)		9000 (19840)
Operating weight kg (lbs) ISO6016 – full tank of fuel and 75kg (165 lbs) operator	1375 (3031)	2175 (4795)	2295 (5059)	2315 (5104)	2450 (5401)	2515 (5544)	4145 (9138)	4345 (9579)	4450 (9810)
Tippling type	Forward Tip High Discharge	Swivel Tip	Swivel Tip High Discharge	Forward Tip	Swivel Tip	Swivel Tip	Forward Tip	Swivel Tip	Forward Tip
Skip capacity – Water m ³ (yd ³)	0.32 (0.42)	0.7 (0.92)		1.25 (1.63)	1.0 (1.31)	1.0 (1.31)	1.6 (2.1)	1.6 (2.09)	2 (2.6)
Skip capacity – Struck m ³ (yd ³)	0.45 (0.59)	1.0 (1.31)		1.6 (2.09)	1.52 (1.99)	1.52 (1.99)	2.4 (3.1)	2.4 (3.1)	3.7 (4.8)
Skip capacity – Heaped m ³ (yd ³)	0.54 (0.71)	1.2 (1.57)		1.95 (2.55)	1.88 (2.46)	1.88 (2.46)	2.9 (3.8)	3.1 (4.1)	4.5 (5.9)

ENGINE	TA1EH	TA2SH	TA2SEH	TA3H	TA3SH	TA3.5SH	TA6H	TA6SH	TA9H
Engine	Kubota D1005	Kubota D1703M		Kubota D1703M	Kubota D1703M	Kubota D1803	Perkins® Syncro		Perkins® Syncro
Number of cylinders	3	3		3		4		4	
Gross power kW (hp)	17.5 (23)	18.5 (25)		18.5 (25)	18.5 (25)	37 (50)	55 (74)		55 (74)
Displacement cc (in ³)	1001 (61.08)	1647 (100.5)		1647 (100.5)	1647 (100.5)	1826 (111.4)	2800 (170.9)		2800 (170.9)
Maximum torque Nm (lbf.ft)	63 (46.5)	97 (71.5)		97 (71.5)	97 (71.5)	150 (110)	375 (277)		375 (277)
Aspiration	Naturally Aspirated	Naturally Aspirated		Naturally Aspirated		Turbocharged	Turbocharged		Turbocharged
Emission compliance	EU Stage V U.S. EPA Tier 4 Final*	EU Stage V U.S. EPA Tier 4 Final*		EU Stage V U.S. EPA Tier 4 Final*		EU Stage V U.S. EPA Tier 4 Final*		EU Stage V U.S. EPA Tier 4 Final*	

TRANSMISSION/DRIVE	TA1EH	TA2SH	TA2SEH	TA3H	TA3SH	TA3.5SH	TA6H	TA6SH	TA9H
Transmission type	Hydrostatic Pump (Poclairn Twinlock) to 4 Hydraulic Wheel Motors	Hydrostatic Motor via Transfer Box to Front & Rear Axles		Hydrostatic Motor via Transfer Box to Front & Rear Axles			Hydrostatic Motor via Transfer Box to Front & Rear Axles		Hydrostatic Motor via Transfer Box to Front & Rear Axles
Tyre size	255/75 x 15.3 x 8 ply (option 7 x 12 narrow tyre)	255 / 75 x 15.3 x 8 ply		295/80-15.3 (10PR)			405–70–20 (14PR)		500–60–22.5 (16PR)
Drive	Hydrostatic 1/1 Twin Lock 4WD	2/2 (High & Low Range – Forward & Reverse) Hydrostatic – Permanent 4WD		2/2 (High & Low Range – Forward & Reverse) Hydrostatic – Permanent 4WD			1/1 Forward and Reverse – Permanent 4WD		1/1 Forward and Reverse – Permanent 4WD
Maximum travel speed mph (kph)	7.5 (12)	10.6 (17)		9.2 (14.8)	9.2 (14.8)	12 (19)	15.5 (25)		15 (24)
Gradeability (Maximum slope gradient)	20% (1 in 5)	25% (1 in 4)		25% (1 in 4)			25% (1 in 4)		20% (1 in 5)

CAPACITIES	TA1EH	TA2SH	TA2SEH	TA3H	TA3SH	TA3.5SH	TA6H	TA6SH	TA9H
Fuel tank capacity L (US gal)	35 (9.25)	23 (6.08)		37 (9.77)			65 (17.17)		65 (17.17)
Hydraulic tank capacity L (US gal)	25 (6.6)	25 (6.6)		37 (9.77)			50 (13.2)		50 (13.2)

* Depending on your Local Legislation - Environmental Protection Agency (EPA)

Note: Metric measurements are the critical values
 - 1 litre = 0.26417 US liquid gallons
 - 1 litre = 0.21997 Imperial liquid gallons

TECHNICAL DATA

ENVIRONMENTAL	TA1EH	TA2SH	TA2SEH	TA3H	TA3SH	TA3.5SH	TA6H	TA6SH	TA9H
Noise emission (to ISO 4871) – Sound pressure (LpAd) (dB)	84	82			82		TBC		TBC
Sound power level (LWA) (dB)	101	101			101		101		101
Noise compliance	Noise – Equipment used outdoors directive 2000/14/EC	Noise – Equipment used outdoors directive 2000/14/EC			Noise – Equipment used outdoors directive 2000/14/EC		Noise – Equipment used outdoors directive 2000/14/EC		Noise – Equipment used outdoors directive 2000/14/EC
Vibration – Hand arm (as defined in EN474–1 all operations)	<4.49 m/s ²	<2.5 m/s ²			<2.5 m/s ²		<2.5 m/s ²		<2.5 m/s ²
Vibration – Whole body (as defined in ISO/TR 25398 – Work cycle)	0.61 rms (0.31 m/s ² Uncertainty)	0.61 rms (0.31 m/s ² Uncertainty)			0.61 rms (0.31 m/s ² Uncertainty)		0.61 rms (0.31 m/s ² Uncertainty)		0.61 rms (0.31 m/s ² Uncertainty)
HYDRAULIC SYSTEM	TA1EH	TA2SH	TA2SEH	TA3H	TA3SH	TA3.5SH	TA6H	TA6SH	TA9H
Pump type	Gear	Gear			Gear		Gear		Gear
Flow rate l/min (US gpm)	22 (5.81)	17.6 (4.65)			24.7 (6.52)		78 (21)		78 (21)
Operating pressure bar (PSI)	150 (2176)	210 (3050)			210 (3045.7)		210 (3045)		210 (3045.7)
Steering system	Orbitrol hydrostaticsteering unit powering central hydraulic steering ram	Orbitrol hydrostaticsteering unit powering central hydraulic steering ram			Orbitrol hydrostaticsteering unit powering central hydraulic steering ram		Orbitrol hydrostaticsteering unit powering central hydraulic steering ram		Orbitrol hydrostaticsteering unit powering central hydraulic steering ram

Note: Metric measurements are the critical values

- 1 litre = 0.26417 Us liquid gallons
- 1 litre = 0.21997 Imperial liquid gallons

TECHNICAL DATA

BRAKING SYSTEM	TA1EH	TA2SH	TA2SEH	TA3H	TA3SH	TA3.5SH	TA6H	TA6SH	TA9H
Working brake	Hydrostatic dynamic on all wheels	Multi-plate in-board – Oil immersed discs on front axle		Multi-plate in-board – Oil immersed discs on front axle			Foot brake – Oil immersed discs on front/rear		Foot brake – Oil immersed discs on front/rear
Parking brake	SAHR brake on rear wheels	Over centre handbrake – Oil immersed discs on front axle		Spring applied hydraulic release (SAHR) – Oil immersed discs on front axle			Over centre parking brake – Dry disc on gearbox output		Over centre parking brake – Dry disc on gearbox output

ELECTRICAL SYSTEM	TA1EH	TA2SH	TA2SEH	TA3H	TA3SH	TA3.5SH	TA6H	TA6SH	TA9H
Voltage	12V	12V		12V			12V		12V
Battery	74Ah	74Ah		74Ah			100Ah		100Ah
Alternator	40A	55A		55A	55A	60A	95A		95A

DIMENSIONS		TA1EH	TA2SH	TA2SEH	TA3H	TA3SH	TA3.5SH	TA6H	TA6SH	TA9H
Total length	mm (ft in)	3006 (9'10")	3606 (11'10")		3744 (12'3")	3930 (12'11")	3930 (12'11")	4388 (14'5")	4648 (15'3")	4510 (14'8")
Total width	mm (ft in)	985 (3'3")* 1110 (3'7")	1473 (4'10")		1957 (6'5")	1846 (6'1")	1846 (6'1")	2300 (7'7")	2211 (7'3")	2389 (7'8")
Wheelbase	mm (ft in)	1440 (4'9")	1900 (6'3")		1939 (6'4")	1939 (6'4")	1939 (6'4")	2450 (8'1")	2450 (8'1")	2450 (8'1")
Ground clearance	mm (ft in)	207 (8")* / 237 (9")	212 (8")		272 (10")	242 (9")	242 (9")	377 (1'3")	377 (1'3")	417 (1'4")
Height to front lip of skip (tipped)	mm (ft in)	559 (1'10") (lowered) 1602 (5'3") (raised)	993 (3'3")	1055 (3'6") (lowered) 1653 (5'5") (raised)	249 (9")	852 (2'9")	852 (2'9")	431 (1'5")	1127 (3'8")	462 (1'6")
Turning radius to outside of skip	mm (ft in)	2324 (7'7")	3698 (12'2")		4708 (15'5")	4542 (14'11")	4542 (14'11")	6487 (21'3")	6388 (20'11")	6557 (21'6")
Steering angle		+/-45°	+/-30.6°		+/-30°			+/-30°		+/-30°
Oscillation		+/-14°	+/-10.5°		+/-10.5°			+/-10°		+/-10°
Height to top of OPS (Raised with beacon)	mm (ft in)	2837 (9'4")	2928 (9'7")		2925 (9'7")			3145 (10'4")		3615 (11'9")

* When fitted with optional narrow tyres.

STANDARD AND OPTIONAL EQUIPMENT

TA1EH STANDARD

Inclinometer / Safe Tip Indicator
Folding ROPS Frame
Reversing Alarm
Flashing Beacon
Hour Metre
Seat Belt (High Visibility Orange)
Seat (adjustable fore/aft, operator weight and back angle)
Heavy Duty Articulation Lock
Wide Tyres (255 / 75x15.2 8ply)
High Visibility Safety Decals for Steps & Handrails
Rear-view mirrors

TA1EH OPTIONS

LED Flashing Beacon
Road Lights (RTA) including Front Light Guards
CESAR Datatag Security
Spare Wheel
Special Paint
Narrow Tyres (7x12)
German / Swiss Road Homologtation Kit

TA2SH / TA2SEH STANDARD

Inclinometer / Safe Tip Indicator
Front-view camera
Folding ROPS Frame
Reversing Alarm
Flashing Beacon
Towing/Recovery Bracket
Leg Guard
Hour Metre
Seat Belt (High Visibility Orange)
Seat (adjustable fore/aft, operator weight and back angle)
Heavy Duty Articulation Lock
High Visibility Safety Decals for Steps & Handrails
Rear-view mirrors

TA2SH / TA2SEH OPTIONS

LED Flashing Beacon
Road Lights (RTA) including Front Light Guards
CESAR Datatag Security
Fan Guard (standard in some markets – check with your local Mecalac dealer)
Spare Wheel
Special Paint (standard in some markets – check with your local Mecalac dealer)
German / Swiss Road Homologtation Kit

TA3H / TA3SH / TA3.5SH STANDARD

Inclinometer / Safe Tip Indicator
Front-view camera
18.5kW EU Stage V Engine (TA3H / TA3SH)
37kW EU Stage V Engine (TA3.5SH)
Folding ROPS Frame
Reversing Alarm
Flashing Beacon
Towing/Recovery Bracket
Leg Guard
Hour Metre
Seat Belt (High Visibility Orange)
Seat (adjustable fore/aft, operator weight and back angle)
Heavy Duty Articulation Lock
High Visibility Safety Decals for Steps & Handrails
Rear-view mirrors

TA3H / TA3SH / TA3.5SH OPTIONS

LED Flashing Beacon
Road Lights (RTA) including Front Light Guards
CESAR Datatag Security
Fan Guard (standard in some markets – check with your local Mecalac dealer)
Spare Wheel
Special Paint (standard in some markets – check with your local Mecalac dealer)
German / Swiss Road Homologtation Kit
Concrete Chute (Swing Only)

**Standard and optional equipment may vary.
Consult your Mecalac dealer for details.**

STANDARD AND OPTIONAL EQUIPMENT

TA6H/TA6SH STANDARD

Inclinometer / Safe Tip Indicator
Front-view camera
Additional Side Protection Gates
Folding ROPS Frame
Reversing Alarm
Flashing Beacon
Towing/Recovery Bracket
Hour Metre
Seat Belt (High Visibility Orange)
Seat (adjustable fore/aft, operator weight and back angle)
Heavy Duty Articulation Lock
Water in Fuel Monitoring
High Visibility Safety Decals for Steps & Handrails
SHIELD Technology Pack
Rear-view mirrors

TA6H/TA6SH OPTIONS

LED Flashing Beacon
Road Lights (RTA) including Front Light Guards
CESAR Datatag Security
Fan Guard
Spare Wheel
Special Paint
German / Swiss Road Homologation Kit
Biodegradable Hydraulic Oil
SHIELD Technology Pack

TA9H STANDARD

Inclinometer / Safe Tip Indicator
Front-view camera
Additional Side Protection Gates
Folding ROPS Frame
Reversing Alarm
Flashing Beacon
Towing/Recovery Bracket
Hour Metre
Seat Belt (High Visibility Orange)
Seat (adjustable fore/aft, operator weight and back angle)
Heavy Duty Articulation Lock
Water in Fuel Monitoring
High Visibility Safety Decals for Steps & Handrails
SHIELD Technology Pack
Rear-view mirrors

TA9H OPTIONS

LED Flashing Beacon
Road Lights (RTA) including Front Light Guards
CESAR Datatag Security
Fan Guard
Spare Wheel
Special Paint
Biodegradable Hydraulic Oil
SHIELD Technology Pack

**Standard and optional equipment may vary.
Consult your Mecalac dealer for details.**



MECALAC FRANCE S.A.S.
2, avenue du Pré de Challes
Parc des Glaisins – CS 40230
Annecy-le-Vieux
FR - 74942 Annecy Cedex
Tel. +33 (0)4 50 64 01 63

**MECALAC BAUMASCHINEN
GMBH**
Am Friedrichsbrunnen
D-24782 Búdelsdorf
Tel. +49(0) 4331 351 0

**MECALAC CONSTRUCTION
EQUIPMENT UK LTD**
Unit 1, Mallory Way
Gallagher Business Park
Coventry, CV6 6PB, UK
Tel. +44 (0)24 7633 9400

**MECALAC İŞ MAKİNELERİ
SAN. VE TİC. LTD. ŞTİ.**
Ege Serbest Bölgesi
Zafer SB Mahallesi Gündüz Sokak No:17/1
35410, Gazimir - İzmir - TÜRKİYE
Tel. +90 232 220 11 15



WWW.MECALAC.COM