

# Mecalac

AS1600  
AS210



## AS1600 - AS210

**Mecalac**







**AS1600**

**AS210**



# AS

## EXPERIENCE OF YOUR WORKSITE

*The Mecalac Swing loader – with high efficiency and speed of action – provides top performance on all construction sites.*

*Its ability to simultaneously drive, maneuver and pivot is key to the high productivity.*

*Switch to space management, mobility and stability.*

**AS1600 / AS210**

# LET'S HAVE A LOOK AT YOUR + ADVANTAGES

## **FIRM GRIP ON YOUR WORKSITE WITH POWERFUL SWING LOADER**

Mecalac swing loaders are compact, versatile, comfortable, safe and extremely powerful. They are characterised by the highest stability paired with maximum agility and efficiency for every worksite. They allow work tasks to be completed faster and therefore more productively.

The key to productivity is that you can simultaneously drive, steer and swing while performing your daily loading work.

The AS1600 is the flagship in the 11-ton class. It was developed as a professional swing loader to meet the highest demands.

- **AIR CONDITIONING SYSTEM**
- **RIGID CHASSIS**
- **LOAD SENSING HYDRAULIC SYSTEM WITH FLOWSHARING**
- **HYDROSTATIC TRACTION DRIVE WITH MDRIVE**
- **FOUR-WHEEL STEERING FOR MAX. STABILITY AND EXCELLENT MANOEUVRABILITY**
- **INTUITIVE OPERATING CONCEPT**
- **SWIVELLING BUCKET ARM WITH POWERFUL Z<sup>PLUS</sup>-KINEMATICS**
- **ELECTRO-HYDRAULIC QUICK-COUPLER**
- **OPTIMAL ACCESS TO ALL SERVICE POINTS**





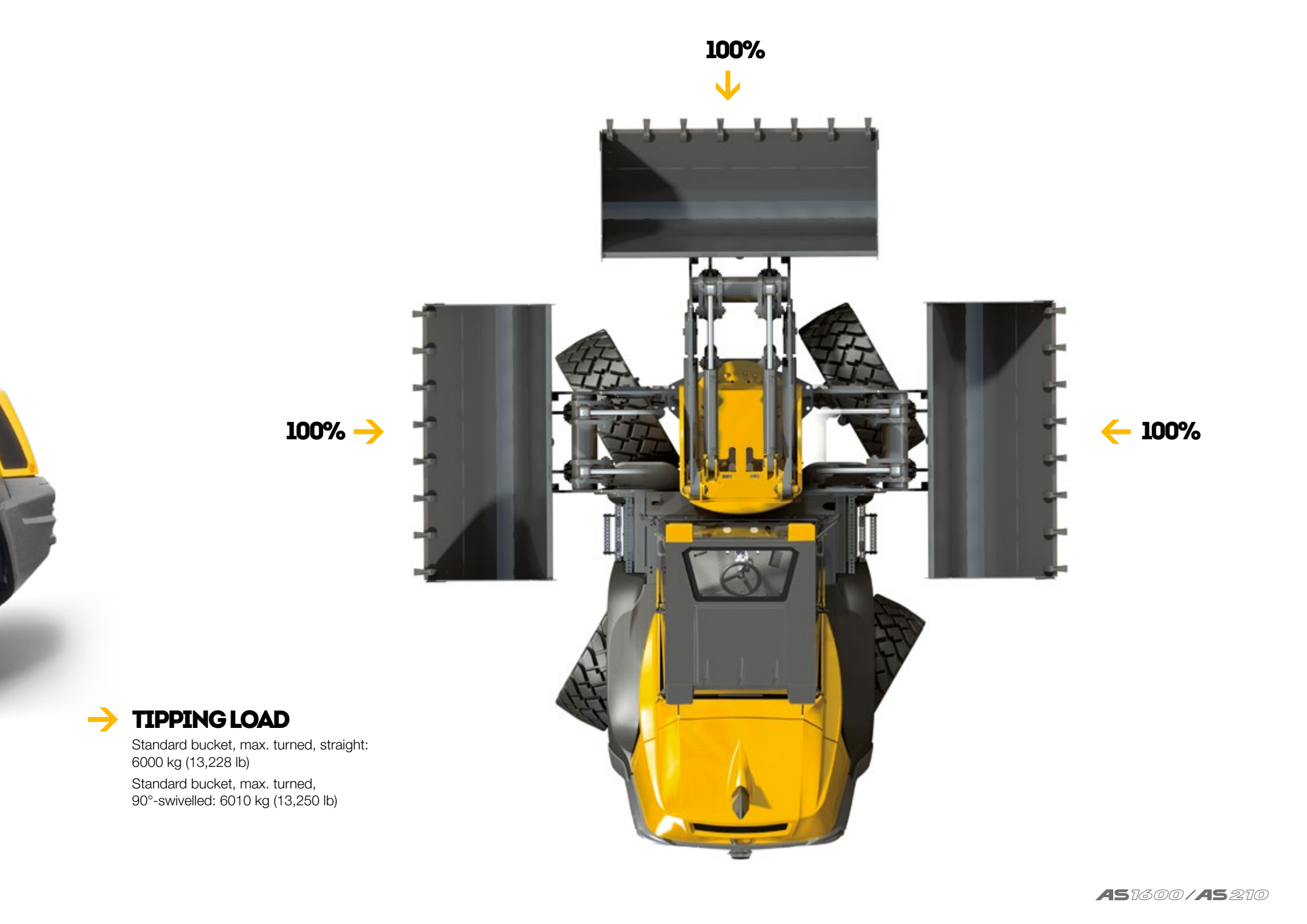
**AS1600/AS210**

↘ **AS1600**

**SWING  
RANGE  
OF 180°+  
WITHOUT  
TIPPING  
LOAD LOSS**







100%



100% →

← 100%

## → **TIPPING LOAD**

Standard bucket, max. turned, straight:  
6000 kg (13,228 lb)

Standard bucket, max. turned,  
90°-swivelled: 6010 kg (13,250 lb)

# LET'S HAVE A LOOK AT YOUR + ADVANTAGES

- **AIR CONDITIONING SYSTEM**
- **MANUALLY SWITCHABLE DIFFERENTIAL LOCK  
IN FRONT AND REAR AXLES**
- **ELECTRO-HYDRAULIC QUICK-COUPLER**
- **LOW-MAINTENANCE, PLAY-FREE CHAIN  
OPERATED SWING SYSTEM WITH CONSTANT  
TURNING SPEED AND -POWER**
- **POWERFUL Z<sup>PLUS</sup>-KINEMATICS WITH PRECISE  
PARALLEL LIFTING AND FINAL POSITION  
CUSHIONING OF THE LIFT CYLINDERS**
- **HIGH PERFORMANCE DEUTZ TURBO  
DIESEL ENGINE**
- **HYDROSTATIC FOUR-WHEEL STEERING  
FOR MAX. STABILITY AND EXCELLENT  
MANOEUVRABILITY**
- **PAYLOAD DEPENDENT AXLE SUPPORT**
- **LOW-MAINTENANCE WET LAMELLA BRAKE**
- **RIGID SINGLE-COMPONENT  
CHASSIS FOR MAXIMUM STABILITY**



**129KW / 175HP AT 2200 RPM**

**DUMP HEIGHT 3.42 M**

**MAX. SWING RANGE OF 180° (2 X 90°)  
WITH ALL ATTACHMENTS**



## SERVICES

# PERFORMANCE, PROFITABILITY, LONGEVITY

## DISCOVER OUR SERVICES

### MECALAC PREMIUM LUBRICANTS

Premium lubricants to get the best out of your machines:

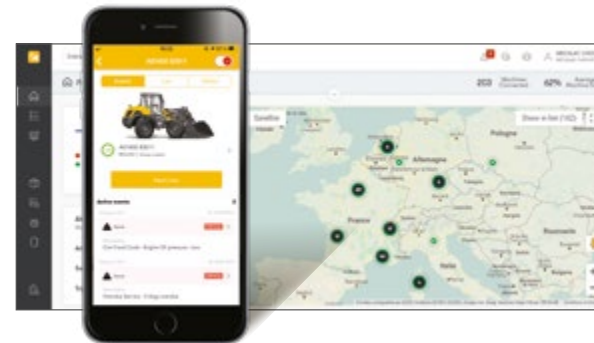
- Extended machine life
- Extended warranty and extended oil change intervals
- All-weather efficiency



### MY MECALAC CONNECTED SERVICES

To optimise the use of its machines, MECALAC offers a range of telematics services:

- Remote fleet management
- Access to all machine usage data of the machines
- Limited machine downtime thanks to preventive maintenance





## MECALAC GENUINE PARTS

Only genuine MECALAC parts ensure optimum service life and maximum performance:

- Certified genuine parts
- Maintenance kits
- Extended warranty



## MECALAC TRAINING

Make full use of the full potential of your Mecalac machines:

- Efficient use
- Individual coaching
- Intensive practice



## MECALAC FINANCIAL SOLUTIONS

A complete range of financial products and associated services to meet your specific needs:

- Machine purchase
- Machine rental
- Competitive rates



## WARRANTY EXTENSIONS

Our solutions are well-adapted to your needs to maximise the life of your machines:

- Customised contracts
- Peace of mind
- Controlled expenses



The list of services offered may vary depending on your country.  
Consult your local Mecalac dealer for details.



# TECHNICAL DATA

→ **AS1600 / AS210**





AS1600 / AS 210

# AS1600 TECHNICAL DATA

## DATA

Operating weight	10,920 kg (24,074 lb)
Engine power	100 kW (136 hp / 134 imperial hp)
Bucket capacity	1.6 – 2.5 m³ (2.1 – 3.3 yd³)
<ul style="list-style-type: none"> <li>Comfortable driver's cab with rops safety system</li> <li>Joystick controls</li> <li>Servo-assisted working hydraulics</li> <li>High-performance, power-controlled hydrostatic four-wheel drive</li> <li>Four-wheel steering</li> </ul>	<ul style="list-style-type: none"> <li>Planetary axes with self locking differential in front axle</li> <li>Low-maintenance wet lamella brakes in front and rear axle</li> <li>Z<sup>PLUS</sup>-kinematics with precise parallel lifting</li> <li>Electro-hydraulic quick-coupler</li> <li>Wide range of attachments</li> </ul>

## ENGINE

Low-noise, water-cooled Deutz TCD 3.6 L4 turbo diesel engine with intercooler. Common Rail injection system, cooled external exhaust gas recirculation (EGR), diesel oxidation catalyst (DOC), diesel particulate filter (DPF) and selective catalytic reduction (SCR)	
	EU Stage V U.S. EPA Tier 4 Final*
Net power at acc. to ISO 14396	2200 rpm 100 kW (136 hp / 134 imperial hp)
Max. torque at acc. to ISO 14396	1600 rpm 500 Nm
Air intake filter: 2-level dry-air filter with safety cartridge	•
Electrical system:	
- Operating voltage	24 V
- Battery capacity	2 x 95 Ah
- Alternator rating	100 A

\*Depending on your Local Legislation - Environmental Protection Agency (EPA)

## DRIVE

Hydrostatic drive with automotive control including MDRIVE (hand throttle and inching speed can be coupled to the pedal), 3 stages (jolt-free), multifunctional lever (joystick) for drive and working hydraulics control	•
Axes:	
planetary axes with four-wheel steering for maximum flexibility, oscillating rear axle	•
Differential lock:	
Automatic self-locking differential in front axle	•
Wheels: tire size	17.5-25
- Optionally	17.5 R25
- Optionally	550/65 R25
Speeds:	
- Road gear	0-20 km/h (0-12 mph)
- Field gear	0-15 km/h (0-9 mph)
Oscillation: max. oscillation angle	+/-10°

**NOTE:** METRIC MEASUREMENTS ARE THE CRITICAL VALUES

- 1 Litre = 0.26417 US Liquid Gallons
- 1 Litre = 0.21997 Imperial Liquid Gallons

## BRAKES

Operating brakes:

1. hydraulically operated wet lamella brake in front and rear axle, acting on all 4 wheels
2. hydrostatic inching brake, acting on all 4 wheels

Parking brake:

Spring-loaded wet lamella brake in rear axle, acting on all 4 wheels

## STEERING

Hydrostatic 4-wheel steering with automatic alignment

(4 steering modes: 4-wheel, front wheel, crab and reduced crab steering)

max. steering angle

+/-35°

Turning radius measured over rear end

R = 4350 mm (14'3")

## HYDRAULIC SYSTEM

Dual-circuit system

1. Load sensing working hydraulics circuit (lift/lower, tilt, accessories), and swivel function (via priority valve); four-fold control valve with primary and secondary protection; with servo-controlled joystick operation

Max. operating pressure at 2200 rpm

138 l/min (36,46 gal/min)  
and 235 bar (3408 psi)

Max. oil flow for auxiliary hydraulics

2. Circuit constant pump (swivelling), single control valve with primary and secondary protection

Float position for lifting cylinders

Boom suspension

## PERFORMANCE DATA

Bucket position:

- Tilting angle

45°

- Dumping angle, top

53°

Lifting force

69 kN (15,511 lbf)

Breakout force

80 kN (17,984 lbf)

Thrust force

90 kN (20,232 lbf)

Tipping load:

- Standard bucket, max. turned, straight

6000 kg (13,228 lb)

- Standard bucket, max. turned, 90°-swivelled

6010 kg (13,250 lb)

Payload on forks:

- Max. turned, frontal, even terrain

4125 kg (9,094 lb)

- Max. turned, max. swivelled, even terrain

3945 kg (8,697 lb)

Tipping load according to ISO 14397, payload according to EN 474-3

## FILLING CAPACITIES

Engine with filter	approx. 8 l (2.1 gal)
Fuel tank	approx. 150 l (39.6 gal)
AdBlue ®-tank	approx. 10 l (2.6 gal)
Front axle	approx. 21 l (5.5 gal)
Rear axle	approx. 18.5 l (4.9 gal)
Hydraulic system with tank	approx. 160 l (42.3 gal)
Distributor gear	approx. 3.4 l (0.9 gal)

## CHASSIS

Rigid single-frame chassis with rear axle support for maximum stability, especially when working in swivelled position

Sealed articulated/oscillated pivot with play-free, chain operated swinging system with constant turning speed and power

Swing boom system with Z<sup>PLUS</sup>-kinematics with precise parallel lifting

Operator's cab with flexible four-point mountings for maximum driver comfort and minimum noise levels

The servo-assisted joystick controls are smooth, accurate and long lasting



# AS1600

## STANDARD / OPTIONAL EQUIPEMENT

### STANDARD FEATURES

Amplly dimensioned ROPS panoramic comfort cabin. The driver's door, which can be opened by 150 °, and the large, wide-opening side windows can be locked within the machine contours.	•
Air-conditioning system	•
Single piece floor mat for easy cleaning	•
Tinted windows	•
Parallel guided windscreen wiper	•
Rear wiper	•
Front and rear screen washing device	•
Heated rear window	•
2 large fold away outside mirrors	•
Roof hatch	•
3-Step drive selector switch	•
Intuitive modular control panel with onboard computer for machine monitoring and machine settings like:	•
- Flow volume of auxiliary hydraulic function	
- Selection of the speed in the low gear	
Speedometer	•
Steering column is adjustable in height and inclination	•
Ergonomically adjustable joystick	•
Multiply adjustable driver's seat	•
Safety belt	•
Sun visor	•
Heating and ventilation system with recirculation air function	•
Main battery switch	•
Interior light	•
Socket	24 V
Coat hook	•
Storage pockets in the cabin	•
Lockable storage compartment at the chassis	•
2 driving lights on cabin roof	•
2 working lights rear	•
2 working lights at monoboom	•
Single key system	•
Hydraulic quick coupler with electric safety device	•
Towing coupling	•
Fastening and lifting points	•
Proportional 1 <sup>st</sup> and 2 <sup>nd</sup> auxiliary hydraulics circuit is integrated in the joystick	•
Color scheme	yellow
Operator's cabin, axles and wheels	grey
Interior mirror	•

### OPTIONAL EQUIPMENT

Version	40 km/h (25 mph)
Wide tires	•
Beacon light	•
Acoustic back up alarm	•
FOPS grid for cabin roof	•
Permanent function for auxiliary hydraulics	•
Safety valves	•
Bio-degradable oil fill for hydraulic system	•
Pressureless return line	•
Left joystick	•
Lockable differential on rear axle	•
Air suspended driver's seat	•
Radio	•
Immobilizer	•
Special corrosion protection for salt applications	•
Attachments as per separate list as pallet fork, load hook etc.	•

### EMISSIONS

Engine: emissions according to Stage V - EU-RL 97/68	•
Noise emission:	
- Sound power level LWA <sup>1</sup>	102 dB(A)
- Acoustic power level LpA <sup>2</sup>	75 dB(A)
Vibrations:	
- Vibration total value <sup>3</sup>	< 2.5 m (8'2")/s <sup>2</sup>
- Effective vibration level <sup>4</sup>	< 0.5 m (1'7")/s <sup>2</sup>

<sup>1</sup> According to 2000/14/EG

<sup>2</sup> According to ISO 6396

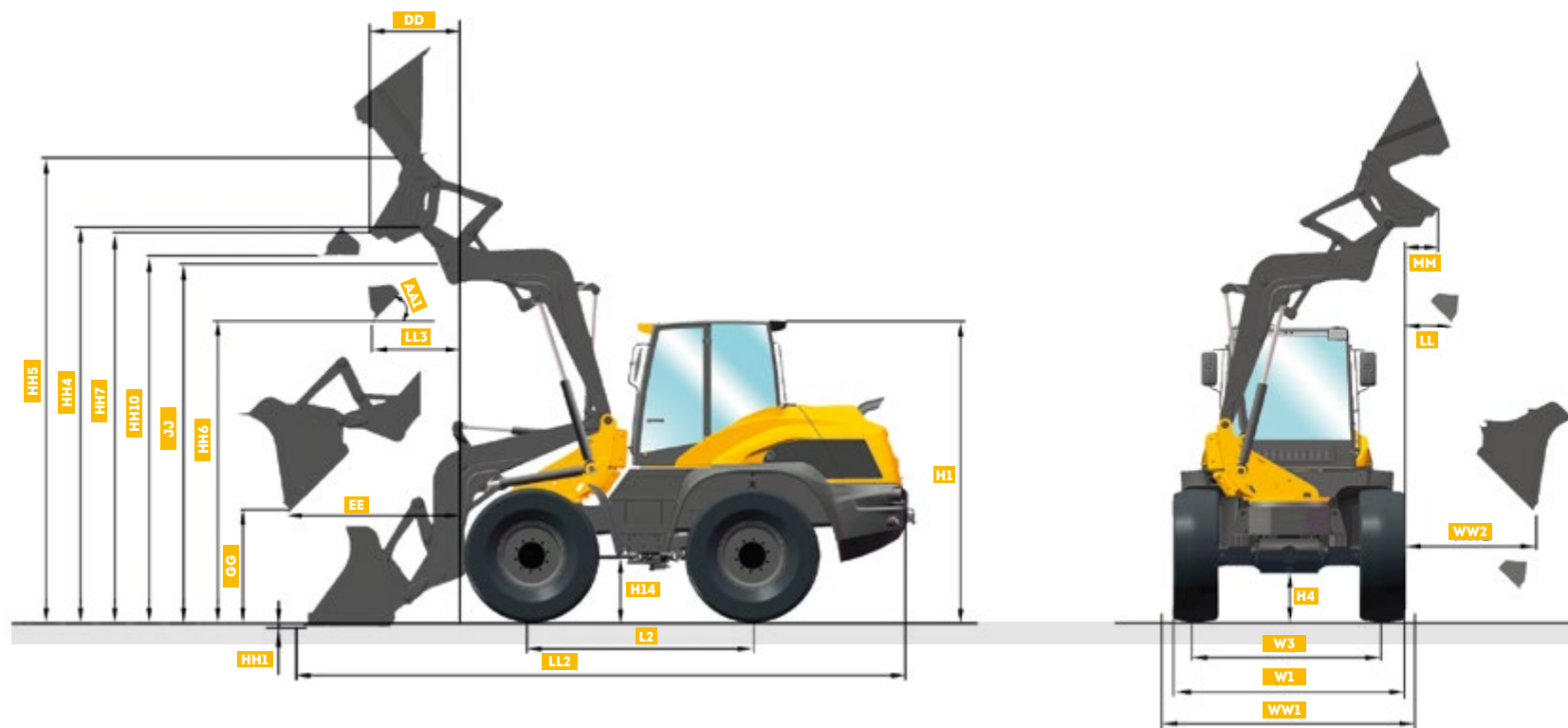
<sup>3</sup> According to ISO/TR 25398

<sup>4</sup> According to ISO/TR 25398

Standard and optional equipment may vary.  
Consult your Mecalac dealer for details.



# **AS1600** **TECHNICAL DATA**



## MACHINE DIMENSIONS

BUCKET	STD. 1.6 m <sup>3</sup> (2.1 yd <sup>3</sup> )	4x1 - 1.6 m <sup>3</sup> (2.1 yd <sup>3</sup> )
AA1	Tipping angle max.	53°
DD	Dumping width at max. lifting height	-
EE	Dumping width max.	1915 mm (6'3.4")
GG	Dumping height at max. width	1100 mm (3'7.3")
H1	Overall height	3100 mm (10'2")
H4	Ground clearance axles gear box	440 mm (1'5.3")
H14	Ground clearance gear box	500 mm (1'7.7")
HH1	Plunge depth	110 mm (0'4.3")
HH4	Locking bolt height	3985 mm (13'0.9")
HH5	Working height max.	4975 mm (16'3.9")
HH6	Dumping height at max. lifting height and max tipping angle	3100 mm (10'2")
HH7	Dumping height at max. lifting height	-

## MACHINE DIMENSIONS

BUCKET	STD. 1.6 m <sup>3</sup> (2.1 yd <sup>3</sup> )	4x1 - 1.6 m <sup>3</sup> (2.1 yd <sup>3</sup> )
HH10	Loading height at max. lifting height	3750 mm (12'3.6")
JJ	Loading height	3390 mm (11'1.5")
L2	Wheelbase	2280 mm (7'5.8")
LL	Dumping width at max. lifting height to the side	550 mm (1'9.7")
LL2	Overall length	6580 mm (21'7.1")
LL3	Dumping width at max. lifting height and 45 tipping angle	1070 mm (3'6.1")
MM	Dumping width at max. lifting height to the side	-
W1	Width over tyres	2460 mm (8'0.9")
W3	Wheel track	1980 mm (6'6")
WW1	Width over bucket	2480 mm (8'1.6")
WW2	Dumping width max. to the side	1495 mm (4'10.9")

# **AS1600** **TECHNICAL DATA**



MACHINE DIMENSIONS		
	FORK	LOAD HOOK
<b>AA3</b>	Tipping angle max.	25°
<b>BB</b>	Nominal reach with payload	940 mm (3'1")
<b>CC</b>	Max. reach	1535 (5'0.4")
<b>DD</b>	Reach at max. lifting height	680 (2'2.8")
<b>FF</b>	Loading reach max.	3255 (10'8.1")
<b>GG</b>	Loading height at max. reach	1750 (5'8.9")
<b>HH</b>	Loading height at max. lifting height	5145 (16'10.6")
<b>HH1</b>	Loading height at min. lifting	60 (0'2.4")
<b>HH9</b>	Overload height at max. lifting height	3735 (12'3")
<b>KK</b>	Max. reach to the side	1110 (3'7.7")
<b>LL</b>	Payload reach to the side at min. lifting height	1415 (4'7.7")
<b>LL2</b>	Overall length	7015 (23'0.2")
<b>MM</b>	Reach to the side at max. lifting height	305 (1'0.4")
<b>PP</b>	Min. height on the side	780 (2'6.7")
<b>RR</b>	Loading reach max. on the side	2845 (9'4")

All data based on standard tires.  
 All data are non-binding.  
 Changes are reserved without notice.  
 The order confirmation is exclusively decisive

# **AS 210** **TECHNICAL DATA**

## DATA

Operating weight	15,100 kg (33,289 lb)
Engine power	129 kW / 175 hp (127.2 imperial hp)
Bucket capacity	2.1 – 3 m³ (2.75 - 3.92 yd³)

- Comfortable driver's cabin with ROPS safety system
- Joystick controls
- Servo-assisted working hydraulics
- High-performance, power-controlled hydrostatic four-wheel drive
- Four-wheel steering
- Planetary axles with manually switchable differential lock in front and rear axles (locking factor 100%)
- Low-maintenance wet lamella brakes
- Z<sup>PLUS</sup>-Kinematics with precise parallel lifting
- Hydraulically controlled quick-coupler
- Wide range of attachments

## ENGINE

Low-noise, water-cooled Deutz TCD 6.1 L4 turbo diesel engine with intercooler. Common Rail injection system, cooled external exhaust gas recirculation (EGR), diesel oxidation catalyst (DOC), diesel particulate filter (DPF) and selective catalytic reduction (SCR)	
	EU Stage V U.S. EPA Tier 4 Final*
Net power at acc. to ISO 14396	2200 rpm - 129 kW / 175 hp (127.2 imperial hp)
Max. torque at acc. to ISO 14396	1450 rpm 825 Nm
Air intake filter: 2-level dry-air filter with safety cartridge	•
Electrical system:	
- Operating voltage	24 V
- Battery capacity	2x100 Ah
- Alternator rating	100 A

\*Depending on your Local Legislation - Environmental Protection Agency (EPA)

## DRIVE

Hydrostatic drive with automotive control, 3 stages, gear-engage under load, multifunctional lever (joystick) for drive and working hydraulics control	•
Axles:	•
Planetary axles with four-wheel steering for maximum flexibility, oscillating rear axle	•
Differential lock: manually switchable differential lock in front and rear axles locking factor 100%	•
Wheels: - Tyre size	20.5-25
- Optional	650/65 R25
Speeds: - Road gear	0-20 km/h (0-12 mph)
- Field gear	(optionally 35 km/h - 0-21 mph) 0-11 km/h (6 mph)
Oscillation: max. oscillation angle	+/-10°

## BRAKES

Working brakes:	
1. Hydraulically operated wet lamella brake in front and rear axle, acting on all 4 wheels	•
2. Hydrostatic inching brake, acting on all 4 wheels	•
Parking brake: Spring-loaded wet lamella brake in rear axle, acting on all 4 wheels	•

## STEERING

Hydrostatic 4-wheel steering with automatic alignment (4 steering modes: 4-wheel, front wheel, crab and reduced crab steering)	•
Max. steering angle	+/-35°

## HYDRAULIC SYSTEM

Dual-circuit system with gear pumps	
1. Working hydraulics circuit (lift/lower, tilt, accessories), and steering (via priority valve); three-fold control valve with primary and secondary protection	•
Max. operating pressure at 2200 rpm	112 l/min (29.6 gal/min) and 230 bar (3336 psi)
Max. oil flow for auxiliary hydraulics	172 l/min (45.4 gal/min)
2. Circuit (swivelling) single control valve with primary and secondary protection, high pressure bypass line to working hydraulics	•
Max. operating pressure at 2200 rpm	60 l/min (15.9 gal/min) and 210 bar (3046 psi)

Servo-assisted hydraulic controls for 1<sup>st</sup> circuit, joystick operated

## PERFORMANCE DATA

Bucket position:	
- Tilting angle	45°
- Dump angle, top	45°
Lifting force	106 kN (2,384 lbf)
Breakout force	130 kN (2,922 lbf)
Thrust force	112 kN (2,517 lbf)
Tipping load: Quick-coupler KAT V	
- Standard bucket, max. turned, straight	8500 kg (18,739 lb)
- Standard bucket, max. turned, 90°-swivelled	8500 kg (18,739 lb)
Payload: Quick-coupler KAT V	
- on forks, max. turned, frontal, even terrain	5350 kg (11,794 lb)
- on forks, max. turned, max. swivelled, even terrain	4690 kg (10,339 lb)
- on forks, max. turned, frontal, even terrain*	6800 kg (14,991 lb)

Tipping load according to ISO 14397; Payload according to EN 474-3

\* Transport position 300 mm above ground

## FILLING CAPACITIES

Engine with filter	approx. 14 l (3.7 gal)
Fuel tank	approx. 250 l (66 gal)
Front axle total	approx. 25 l (6.6 gal)
Rear axle with gearbox	approx. 25 l (6.6 gal)
Hydraulic system with tank	approx. 230 l (60.8 gal)
Distributor gear	approx. 9.5 l (2.5 gal)
AdBlue®-tank	approx. 20 l (5.2 gal)

## NOTE: METRIC MEASUREMENTS ARE THE CRITICAL VALUES

- 1 Litre = 0.26417 US Liquid Gallons
- 1 Litre = 0.21997 Imperial Liquid Gallons



**AS210**

# STANDARD / OPTIONAL EQUIPEMENT

**STANDARD FEATURES**

Rigid chassis with rear axle support for maximum stability, especially while working in swivelled position	•
Unique 180° chain operated, end cushioned swing system without clearance and two swing cylinders for constant speed and torque	•
Z <sup>PLUS</sup> kinematics incl. precise parallel lifting and bucket position indicator	•
Electro-hydraulically operated quick coupler	•
Ride control	•
Tyres: 20.5 – 25 (Profile: EM-60)	•
3-Speed ranges shiftable under load	•
Rear camera system	•
Four-wheel drive	•
Four-wheel and front-wheel steering	•
100% differential lock in front and rear axles manually activated	•
Telematic system	•
Air conditioning	•
Headlights at front of cabin	•
Working lights on the boom	•
Working lights at rear of cabin	•
Tinted glass	•
Front and rear wipers and washers	•
Rear window heating	•
2 large rear-view mirrors	•
Rear mirror in cabin	•
Intuitive modular control panel with speedometer	•
Lockable cabin door on left side	•
Sun blind	•
Cabin heating with 3 level fresh air ventilation	•
Adjustable steering-wheel	•
Adjustable driver's seat (adjusts to driver's weight)	•
Seat belt	•
Automatic activation of parking brake in neutral position	•
Interior light	•
Glovebox	•
Lashing rings	•
Towing hook	•
Colour: yellow / grey	•

**OPTIONAL EQUIPMENT**

35 km/h (0-21 mph) version	•
Different tyre options	•
LED working lights	•
LED beacon light	•
Reverse warning system	•
FOPS protecting system	•
Bucket protection compliant to road-safety standards	•
Auxiliary hydraulics 2 <sup>nd</sup> circuit	•
Central lubrication system	•
Bio-degradable oil fill for hydraulic system	•
Radio incl. Bluetooth, USB, MP3, RDS	•
Lift delimiter	•
Pressureless return line	•
Leak-oil line	•
Safety valves for lift and tilt cylinders	•
Immobilizer	•
Towing device	•
Road safety kit	•
Air suspended driver seat, incl. seat heater	•
Fuel refuelling pump	•
Wide range of attachments like pallet fork, load hook, buckets etc.	•

**EMISSIONS**

Emissions according to Stage V - EU-RL 97/68

Noise emission:	
Sound power level LWA <sup>1</sup>	
Acoustic power level LpA <sup>2</sup>	104 dB(A)
The exterior (1) and interior (2) noise levels correspond to the standards	76 dB(A)

Vibrations:

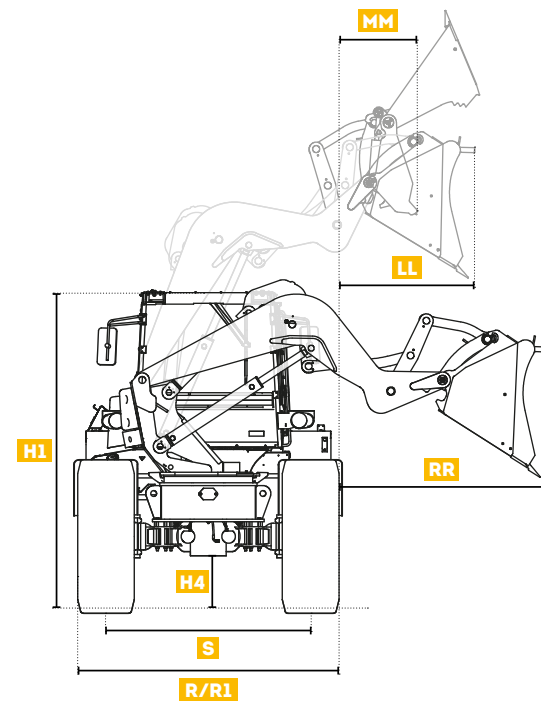
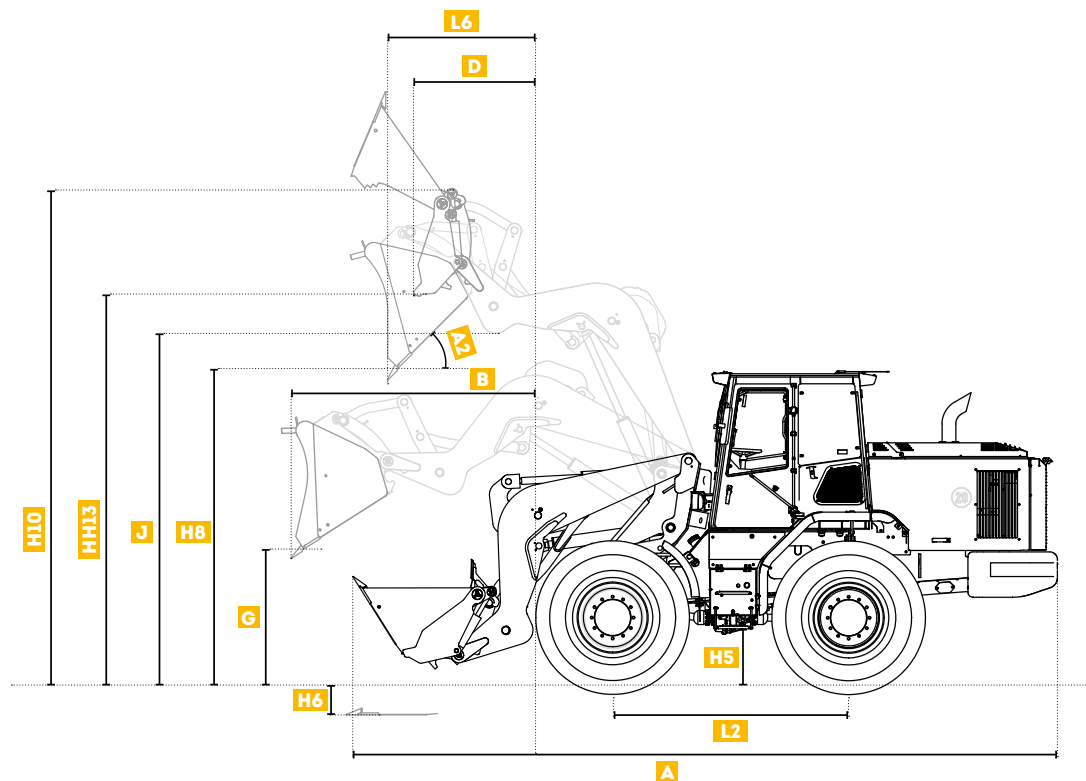
Vibration total value <sup>3</sup>	< 2.5 m (8'2")/s <sup>2</sup>
Effective vibration level <sup>4</sup>	< 0.5 m (1'7")/s <sup>2</sup>

<sup>1</sup> According to 2000/14/EG<sup>2</sup> According to ISO 6396<sup>3</sup> According to ISO/TR 25398<sup>4</sup> According to ISO/TR 25398

All technical data refer to the standard machine with quick-coupler KAT V if not specified differently.

Standard and optional equipment may vary.  
Consult your Mecalac dealer for details.

# **AS 210** **TECHNICAL DATA**

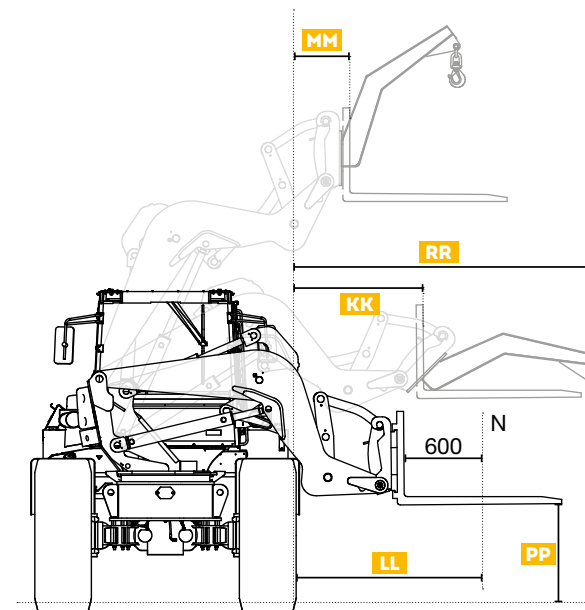
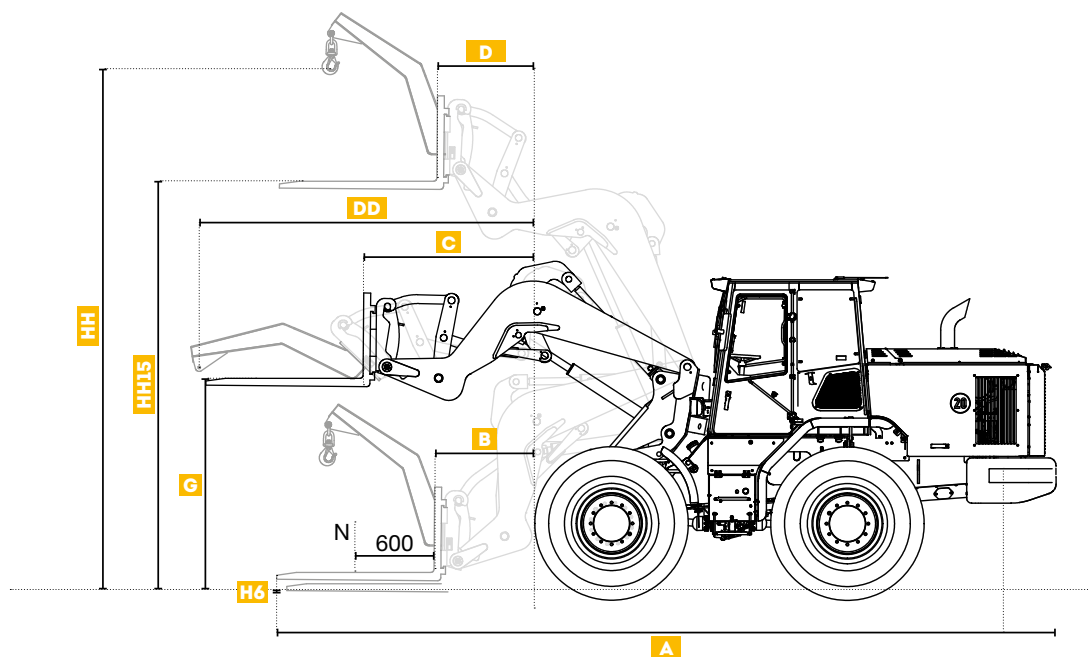


MACHINE DIMENSIONS		KAT V	
BUCKET		STD. 2.1 m <sup>3</sup> (2.75 yd <sup>3</sup> )	4x1 - 1.8 m <sup>3</sup> (2.35 yd <sup>3</sup> )
A	Overall length	7230 mm (23'8.6")	7200 mm (23'7.5")
A2	Tipping angle max.	45°	45°
B	Dumping width max.	2150 mm (7'0")	1960 mm (6'5.2")
D	Dumping width at max. lifting height and 45° tipping angle	-	1340 mm (4'4.8")
G	Dumping height at max. width	1220 mm (4'0")	1135 mm (3'8.7")
H1	Overall height	3160 mm (10'4.4")	3160 mm (10'4.4")
H4	Ground clearance axles gear box	500 mm (1'7.7")	500 mm (1'7.7")
H5	Ground clearance gear box	500 mm (1'7.7")	500 mm (1'7.7")
H6	Plunge depth	110 mm (0'4.3")	320 mm (1'0.6")
H8	Dumping height at max. lifting height and 45° tipping angle	3230 mm (10'7.2")	3250 mm (10'8")
H10	Working height max.	5350 mm (17'6.6")	5355 mm (17'6.8")

MACHINE DIMENSIONS		KAT V	
BUCKET		STD. 2.1 m <sup>3</sup> (2.75 yd <sup>3</sup> )	4x1 - 1.8 m <sup>3</sup> (2.35 yd <sup>3</sup> )
HH13	Dumping height at max. lifting height	-	4300 mm (14'1.3")
J	Loading height	3575 mm (11'8.7")	3575 mm (11'8.7")
LL	Dumping width at max. lifting height and 45° tipping angle to the side	980 mm (3'2.6")	1055 mm (3'5.5")
L2	Wheelbase	2400 mm (7'10.5")	2400 mm (7'10.5")
L6	Dumping width at max. lifting height and 45° tipping angle	1400 mm (4'7")	1425 mm (4'8")
MM	Dumping width at max. lifting height to the side	-	800 mm (2'7.5")
RR	Dumping width max. to the side	1730 mm (5'8")	1560 mm (5'1.4")
S	Wheel track	2080 mm (6'9.9")	2080 mm (6'9.9")
R	Width over bucket	2700 mm (8'10")	2700 mm (8'10")
R1	Width over tyres	2605 mm (8'6.6")	2605 mm (8'6.6")

All data based on standard tires. All data are non-binding. Changes are reserved without notice. The order confirmation is exclusively decisive

# **AS 210** **TECHNICAL DATA**



MACHINE DIMENSIONS		KAT V	
		FORKS	LOAD HOOK
<b>A</b>	Overall length	7900 mm (25'11")	7300 mm (23'11")
<b>AS</b>	Tipping angle max.	25°	-
<b>B</b>	Nominal reach with payload	1020 mm (3'4.2")	-
<b>C</b>	Max. reach	1740 mm (5'8.5")	-
<b>D</b>	Reach at max. lifting height	990 mm (3'3")	-
<b>DD</b>	Loading reach max.	-	3410 mm (11'2.3")
<b>G</b>	Loading height at max. reach	2160 mm (7'1")	-
<b>HH</b>	Loading height at max. lifting height	-	5310 mm (17'5")

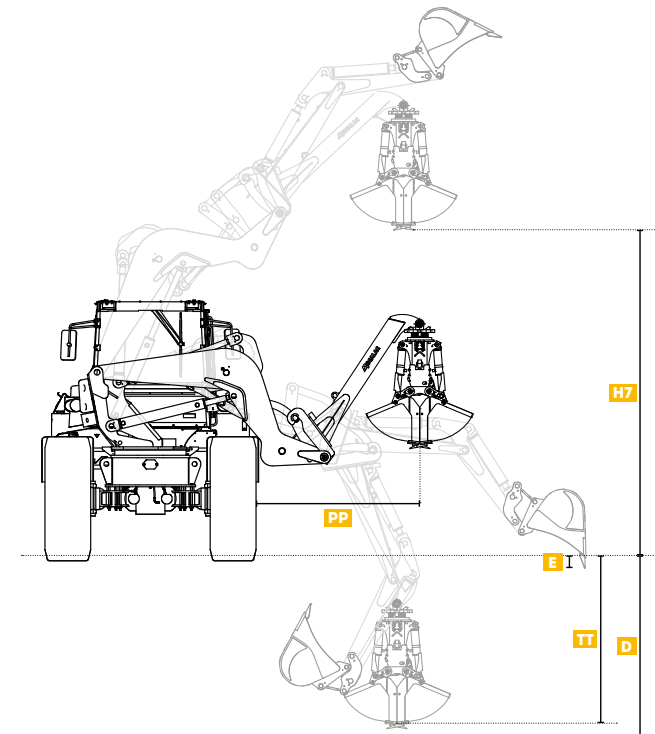
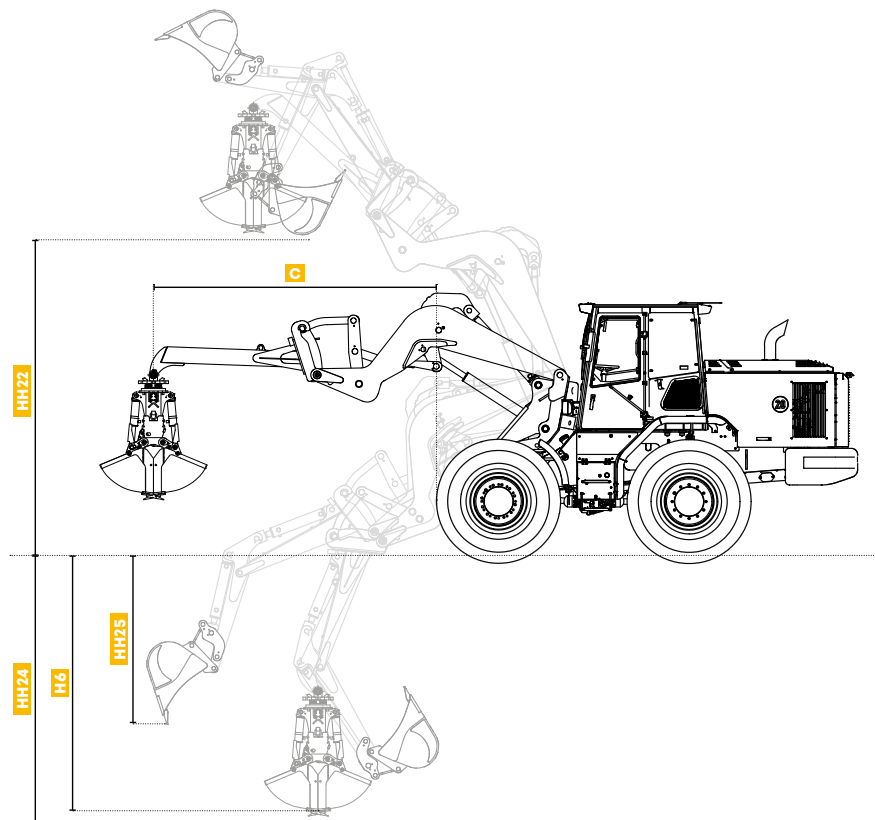
MACHINE DIMENSIONS		KAT V	
		FORKS	LOAD HOOK
<b>H6</b>	Loading height at min. lifting	70 mm (0'2.8")	-
<b>HH15</b>	Overload height at max. lifting height	4100 mm (13'5.4")	-
<b>KK</b>	Max reach to the side	1315 mm (4'3.8")	-
<b>LL</b>	Payload reach to the side at min. lifting height	1720 mm (5'7.7")	-
<b>MM</b>	Reach to the side at max. lifting height	570 mm (1'10")	-
<b>PP</b>	Min. height on the side	1075 mm (3'6.3")	-
<b>RR</b>	Loading reach max. on the side	-	2990 mm (9'9.7")





# AS 210

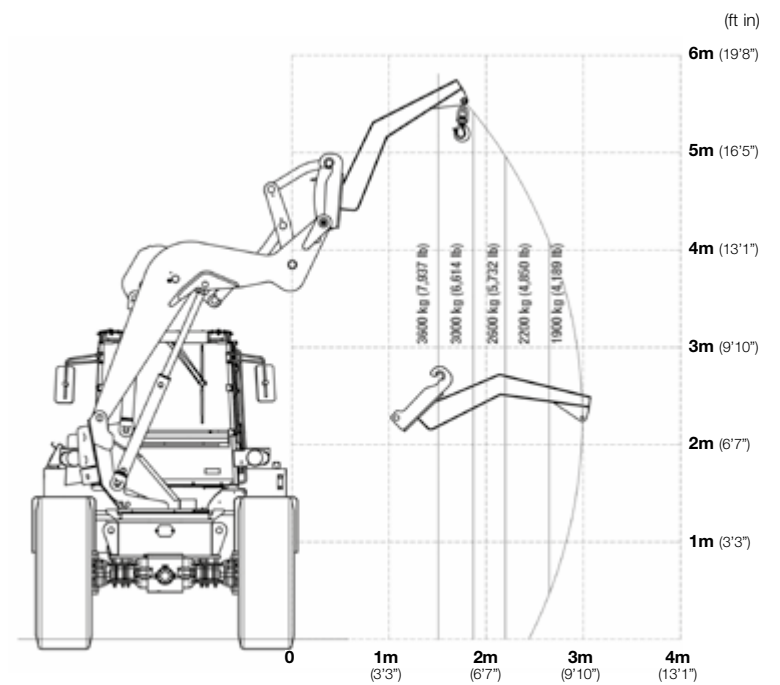
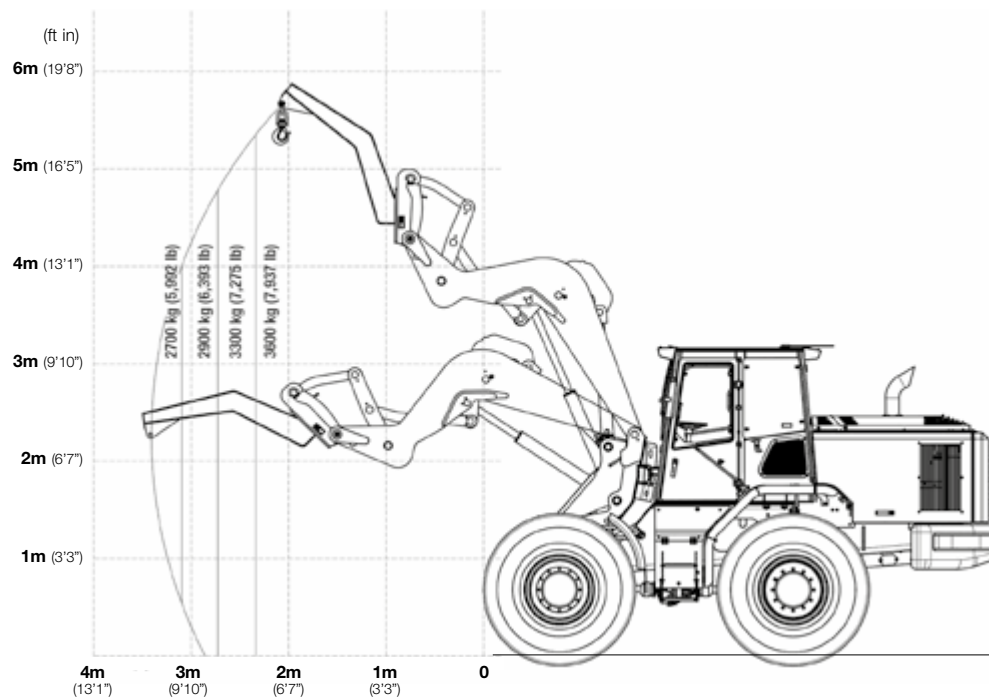
## TECHNICAL DATA

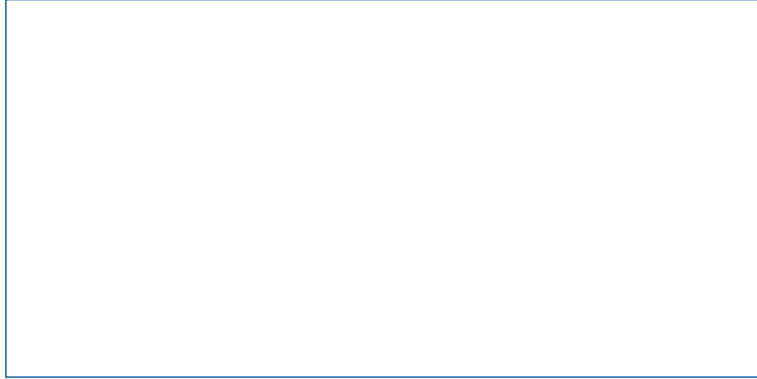


MACHINE DIMENSIONS		KAT V	
		EXCAVATOR	GRAB
C	Max. reach of grab	-	3560 mm (11'8")
D	Max. digging depth of excavator on the side	2300 mm (7'7")	-
E	Vertical digging depth on the side	100 mm (0'4")	-
H6	Max. digging depth of grab	-	3200 mm (10'6")
H7	Overload height of grab at max. lifting height	-	4100 mm (13'5")
HH22	Overload height of excavator at max. lifting height	3900 mm (12'9")	-
HH24	Max. digging depth of excavator	3350 mm (10'12")	-
HH25	Vertical digging depth	2000 mm (6'7")	-
PP	Max. reach of grab on the side	-	3140 mm (10'4")
TT	Max. digging depth of grab at min. lifting on the side	-	2150 mm (7')

# **AS210** **TECHNICAL DATA**

## **LOAD CAPACITY CHARTS FOR LOAD HOOK ATTACHMENT**





**MECALAC FRANCE S.A.S.**  
2, avenue du Pré de Challes  
Parc des Glaisins – CS 40230  
Annecy-le-Vieux  
FR - 74942 Annecy Cedex  
Tel. +33 (0)4 50 64 01 63

**MECALAC BAUMASCHINEN  
GMBH**  
Am Friedrichsbrunnen  
D-24782 Büdelsdo  
Tel. +49(0) 4331 351 0

**MECALAC CONSTRUCTION  
EQUIPMENT UK LTD**  
Unit 1, Mallory Way  
Gallagher Business Park  
Coventry, CV6 6PB, UK  
Tel. +44 (0)24 7633 9400

**MECALAC İŞ MAKİNELERİ  
SAN. VE TİC. LTD. ŞTİ.**  
Ege Serbest Bölgesi  
Zafer SB Mahallesi Gündüz Sokak No:17/1  
35410, Gazimür - İzmir - TÜRKİYE  
Tel. +90 232 220 11 15



**WWW.MECALAC.COM**